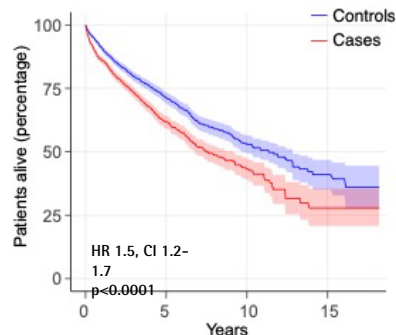
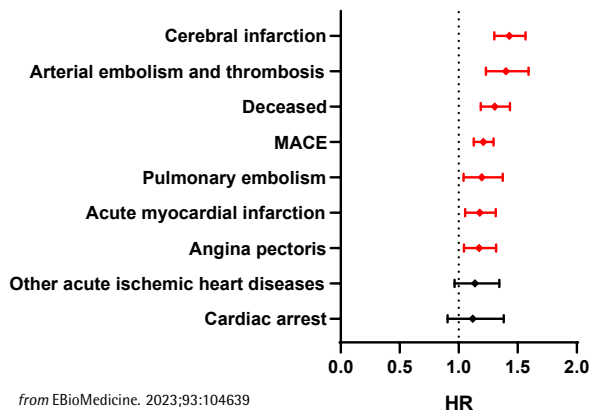


State-of-the-art technology and expertise
for all your pre-clinical, mechanistic, and
clinical needs in dermatology research.

- ▶ Pre-clinical Research
- ▶ Clinical Research
- ▶ Education



Epidemiology



"We combine
our unique expertise,
our project design creativity,
and our passion to advance
our clients' success in
delivering novel and game-
changing skin and hair
research solutions"

President:
Prof. Dr. Ralf Paus

Monasterium Laboratory
Skin & Hair Research Solutions GmbH

Mendelstr. 17, 48149 Münster, Germany
Phone: +49 (0) 251 93264-458
Fax: +49 (0) 251 93264-457

www.monasteriumlab.com

For inquiries, please contact:

CEO:
Dr. Marta Bertolini (PhD)

m.bertolini@monasteriumlab.com
+ 49 (0)251 93263-080

Download flyer



The database

- Over 120 million electronic health records (EHRs)
- 5 Unique Networks
 - Demographics
 - Diagnoses
 - Medications
 - Procedures
 - Laboratory and vitals
 - Genetics (limited)

Access through our experienced partners

- EBioMedicine. 2023 Jul;93:104639
- Br J Dermatol. 2023 Mar 30;188(4):499-505
- J Am Acad Dermatol. 2023 Feb;88(2):388-394

Example: Cutaneous lupus erythematosus is associated with an increased risk of cardiac and vascular diseases: a large-scale, propensity-matched global retrospective cohort study.

	Before matching				p-value	SD	After matching					
	Controls		Cases				Controls		Cases			
	N	value	N	value			N	value	N	value		
CLE												
Age at Index (years) ^a	4,343,385	45.6527 (19.8966)	30,070	51.0767 (16.1117)	<0.0001	0.2996	30,070	51.5357 (15.9960)	30,070	51.0767 (16.1117)	0.0005	0.0286
Female ^a	2,505,311	57.68%	23,203	77.16%	<0.0001	0.4250	23,165	77.03%	23,203	77.16%	0.6979	0.0032
Male	1,836,002	42.27%	6859	22.81%	<0.0001	0.4246	6902	22.95%	6859	22.81%	0.6764	0.0034
Unknown Gender	2072	0.05%	10	0.03%	0.2523	0.0072	10	0.03%	10	0.03%	1.0000	0.0000
White	2,931,370	67.49%	20,166	67.06%	0.1153	0.0091	20,408	67.87%	20,166	67.06%	0.0352	0.0172
Black or African American ^a	703,229	16.19%	5076	16.88%	0.0012	0.0186	5087	16.92%	5076	16.88%	0.9047	0.0010
Asian	140,399	3.23%	498	1.66%	<0.0001	0.1022	794	2.64%	498	1.66%	<0.0001	0.0679
Unknown Race	551,362	12.69%	4192	13.94%	<0.0001	0.0367	3659	12.17%	4192	13.94%	<0.0001	0.0526
Not Hispanic or Latino ^a	3,119,470	71.82%	21,960	73.03%	<0.0001	0.0270	21,940	72.96%	21,960	73.03%	0.8543	0.0015
Hispanic or Latino	348,510	8.02%	1961	6.52%	<0.0001	0.0579	2249	7.48%	1961	6.52%	<0.0001	0.0375
Unknown Ethnicity	875,405	20.16%	6149	20.45%	0.2053	0.0073	5881	19.56%	6149	20.45%	0.0063	0.0223
Nicotine dependence ^a	409,432	9.43%	8364	27.82%	<0.0001	0.4861	8329	27.70%	8364	27.82%	0.7499	0.0026
Overweight and obesity ^a	828,700	19.08%	7740	25.74%	<0.0001	0.1602	7832	26.05%	7740	25.74%	0.3918	0.0070
Disorders of lipoprotein metabolism ^a	1,552,263	35.74%	10,033	33.37%	<0.0001	0.0499	10,035	33.37%	10,033	33.37%	0.9862	0.0001
Essential hypertension ^a	1,434,758	33.03%	13,799	45.89%	<0.0001	0.2653	13,815	45.94%	13,799	45.89%	0.8958	0.0011
Diabetes mellitus ^a	566,102	13.03%	8577	28.52%	<0.0001	0.3889	8663	28.81%	8577	28.52%	0.4380	0.0063
Chronic lower respiratory diseases ^a	763,086	17.57%	8701	28.94%	<0.0001	0.2715	8655	28.78%	8701	28.94%	0.6789	0.0034
Chronic kidney disease ^a	198,225	4.56%	4324	14.38%	<0.0001	0.3400	4292	14.27%	4324	14.38%	0.7096	0.0030
Neoplasms ^a	1,084,571	24.97%	14,636	48.67%	<0.0001	0.5070	14,534	48.33%	14,636	48.67%	0.4053	0.0068
DLE												
Age at Index (years) ^a	4,343,385	45.6527 (19.8966)	27,187	50.6637 (16.0783)	<0.0001	0.2770	27,187	51.1223 (16.0271)	27,187	50.6637 (16.0783)	0.0009	0.0286
Female ^a	2,505,311	57.68%	20,992	77.21%	<0.0001	0.4262	20,935	77.00%	20,992	77.21%	0.5607	0.0050
Male	1,836,002	42.27%	6189	22.77%	<0.0001	0.4257	6250	22.99%	6189	22.77%	0.5334	0.0053
Unknown Gender	2072	0.05%	10	0.04%	0.4106	0.0053	10	0.04%	10	0.04%	1.0000	0.0000
White	2,931,370	67.49%	18,233	67.07%	0.1356	0.0091	18,540	68.19%	18,233	67.07%	0.0049	0.0241
Black or African American ^a	703,229	16.19%	4788	17.61%	<0.0001	0.0379	4640	17.07%	4788	17.61%	0.0936	0.0144
Asian	140,399	3.23%	459	1.69%	<0.0001	0.0998	710	2.61%	459	1.69%	<0.0001	0.0637
Unknown Race	551,362	12.69%	3578	13.16%	0.0213	0.0139	3188	11.73%	3578	13.16%	<0.0001	0.0435
Not Hispanic or Latino ^a	3,119,470	71.82%	20,201	74.30%	<0.0001	0.0560	20,137	74.07%	20,201	74.30%	0.5305	0.0054
Hispanic or Latino	348,510	8.02%	1851	6.81%	<0.0001	0.0464	2058	7.57%	1851	6.81%	0.0006	0.0295
Unknown Ethnicity	875,405	20.16%	5335	18.89%	<0.0001	0.0320	4992	18.36%	5335	18.89%	0.1152	0.0135
Nicotine dependence ^a	409,432	9.43%	7947	29.23%	<0.0001	0.5181	7891	29.03%	7947	29.23%	0.5971	0.0045
Overweight and obesity ^a	828,700	19.08%	7223	26.57%	<0.0001	0.1791	7306	26.87%	7223	26.57%	0.4212	0.0069
Disorders of lipoprotein metabolism ^a	1,552,263	35.74%	9122	33.55%	<0.0001	0.0459	9223	33.92%	9122	33.55%	0.3596	0.0079
Essential hypertension ^a	1,434,758	33.03%	12,706	46.74%	<0.0001	0.2826	12,741	46.86%	12,706	46.74%	0.7836	0.0026
Diabetes mellitus ^a	566,102	13.03%	8070	29.68%	<0.0001	0.4149	8271	30.42%	8070	29.68%	0.0601	0.0161
Chronic lower respiratory diseases ^a	763,086	17.57%	8094	29.77%	<0.0001	0.2901	8051	29.61%	8094	29.77%	0.6865	0.0035
Chronic kidney disease ^a	198,225	4.56%	4087	15.03%	<0.0001	0.3577	4014	14.76%	4087	15.03%	0.3793	0.0075
Neoplasms ^a	1,084,571	24.97%	13,586	49.97%	<0.0001	0.5347	13,626	50.12%	13,586	49.97%	0.7315	0.0029
SCL												
Age at Index (years) ^a	4,343,385	45.6527 (19.8966)	1609	58.1541 (15.1819)	<0.0001	0.7064	1609	58.4891 (14.8447)	1609	58.1541 (15.1819)	0.5269	0.0223
Female ^a	2,505,311	57.68%	1244	77.32%	<0.0001	0.4287	1236	76.82%	1244	77.32%	0.7373	0.0118
Male	1,836,002	42.27%	365	22.69%	<0.0001	0.4277	372	23.21%	365	22.69%	0.7690	0.0104
Unknown Gender	2072	0.05%	0	0.00%	0.3809	0.0309	0	0.02%	0	0.00%	0.0015	0.1118
White	2,931,370	67.49%	1176	73.09%	<0.0001	0.1227	1218	75.70%	1176	73.09%	0.0001	0.0598
Black or African American ^a	703,229	16.19%	115	7.15%	<0.0001	0.2845	122	7.58%	115	7.15%	0.0001	0.0598
Asian	140,399	3.23%	13	0.81%	<0.0001	0.1730	45	2.80%	13	0.81%	0.0001	0.0598
Unknown Race	551,362	12.69%	300	18.65%	<0.0001	0.1643	223	13.86%	300	18.65%	0.0001	0.0598
Not Hispanic or Latino ^a	3,119,470	71.82%	1110	68.99%	0.0115	0.0621	1095	68.06%	1110	68.99%	0.0001	0.0598
Hispanic or Latino	348,510	8.02%	44	2.74%	<0.0001	0.2361	126	7.83%	44	2.74%	0.0001	0.0598

Highly granular data allowing precise propensity

Highly granular data allowing precise propensity matching

TriNetX

LIFE SCIENCES HEALTHCARE DATA PRODUCTS SERVICES RESOURCES ABOUT US CONNECT WITH US SIGN IN

Explore. Discover. Connect.

Welcome to the world's largest, living ecosystem of real-world data and evidence for the life sciences and healthcare industries. **Global data, for global health.**

Study Feasibility

Evaluate criteria, comparators, and endpoints based on real-world data spanning domains from diagnosis to genomic variants. Test criteria against patients receiving care now.

Learn More

Trial Collaboration

Trial sponsors, connect with healthcare organizations with the experience and patients you're seeking. Healthcare organizations, attract trial and chat review opportunities from sponsors advancing new treatments.

Learn More

Evidence Generation

Answer questions of safety, efficacy, and value for all your stakeholders from patients to regulators. Gain rapid insights from our platform analytics, dive deeper with licensed datasets, or engage our team of evidence strategists.

Learn More

Drug Safety

Detect, manage, and mitigate drug safety issues with next-generation pharmacovigilance software. Combine data from public sources with IRL and claims to enhance reporting algorithms.

Learn More

Statistical analysis on the TriNetX platform

CLE: Cutaneous lupus erythematosus
HR: Hazard ratio

a

CLE

Intracranial haemorrhage

Sequelae of cerebrovascular disease

Stenosis of precerebral arteries

Cerebrovascular disease

b

CLE

Peripheral vascular diseases

Gangrene

Aneurysm

Chronic ischemic heart disease

Other disorders of circulatory system

Ischaemic diseases of capillaries

Other disorders of arteries and arterioles

Hypertension

Pulmonary heart disease

Aortic aneurysm and dissection

Atherosclerosis

Hypertensive heart disease

Secondary hypertension

Hypertensive chronic kidney disease

Hypertensive heart & chronic kidney disease

c

CLE

Venous embolism and thrombosis

Other disorders of veins

Disorders of lymphatic vessels & lymph nodes

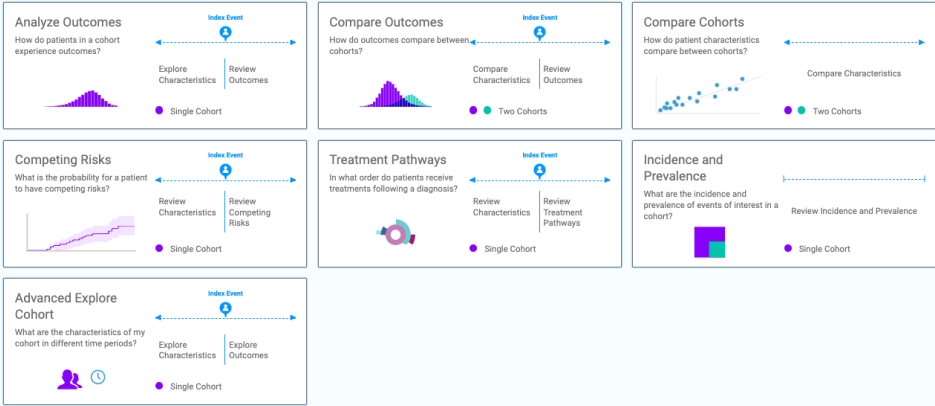
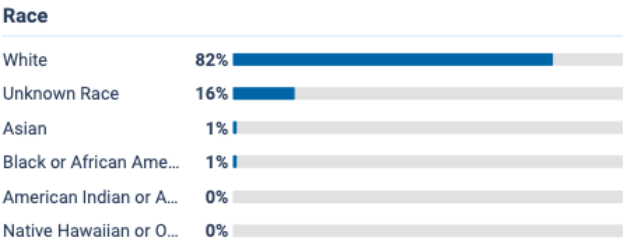
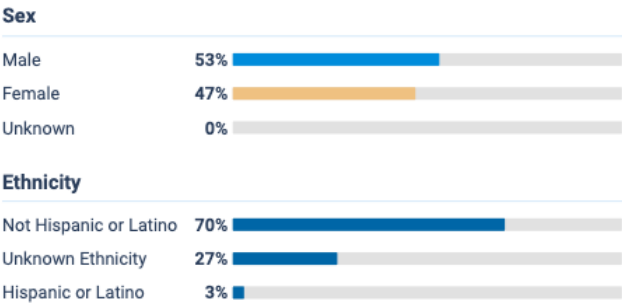
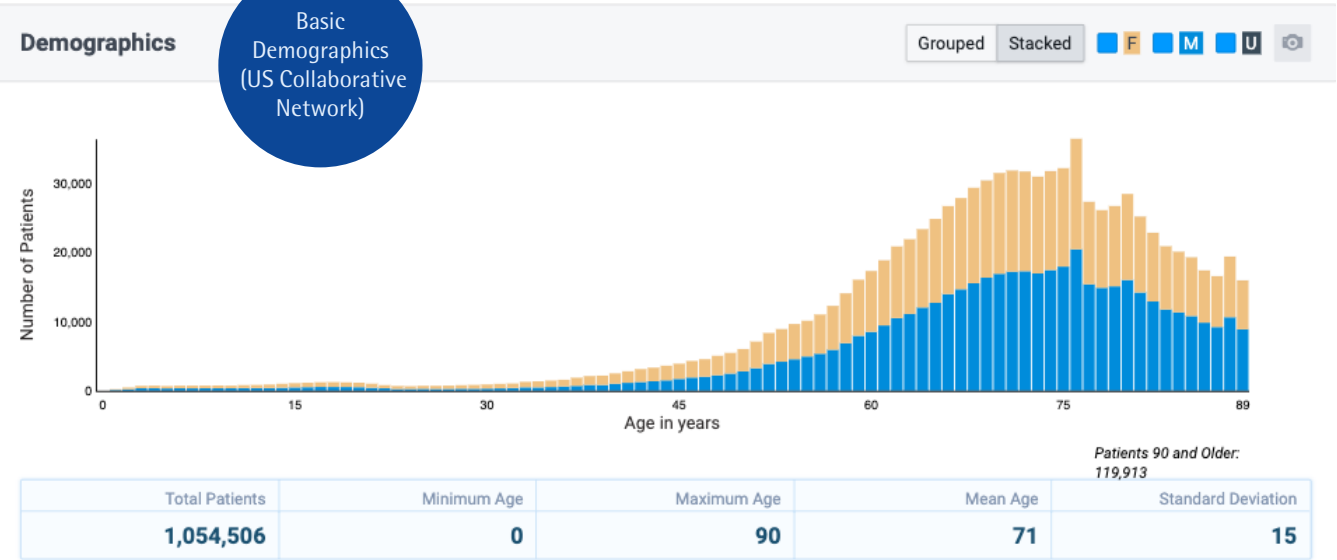
Phlebitis and thrombophlebitis

Varicose veins of lower extremities

Number of electronic health records with ICD10CM:L57.0 (actinic keratosis)

Global Collaborative Network	1,108,477
US Collaborative Network	1,074,538
EMEA Collaborative Network (Europe)	30,030
LATAM Collaborative Network (Latin America)	2,981
APAC Collaborative Network (Asia-Pacific)	928

All data shown are as of July, 2023



Analytical tools

WHY US?

Great network of dermatologists and plastic surgeons collecting samples from healthy and diseased skin

Our vision is to provide our clients and partners with the highest quality research in investigative dermatology and trichology – from basic science to translational applied and contract research of high relevance for clinical applications.

World-class scientific leadership & international team

Clinically-relevant *ex vivo* and *in vivo* models

Strong academic background & publication record

What we can do for our clients:

- Conceptualize & build proof-of-concept studies
- Carry out full service portfolio for pre-clinical skin & hair research (*in vitro/ex vivo* assays, and humanized mouse models)
- Investigate side effects in the skin or hair follicle
- Establish novel cutting edge methodologies and techniques
- Design tailor-made & customized assays for all needs
- Identify, characterize, or validate novel targets and therapeutics for skin & hair disorders
- Discover mechanistic action stories, biomarkers & predictors of response
- Conduct investigator initiated skin & hair clinical trials
- Provide access to human healthy & diseased skin and hair specimen
- Prepare comprehensive project reports & manuscript drafts

Our ambition is to establish and refine research techniques:
Advanced Methodology Program

Global client list & testimonials

Investigative dermatology:
Acne Vulgaris, Atopic Dermatitis, Psoriasis, Alopecia Areata, Androgenic Alopecia, Hidradenitis Suppurativa, Vitiligo, Chronic Itch, Prurigo Nodularis, etc.

Biobank:
Full access to skin & hair samples (patients & healthy subjects)

Exceptional state-of-the-art research technology

We are supported by world-wide recognized experts in dermatology