

To investigate hair follicle metabolism and the effect of nutraceutical ingredient in human hair follicles *ex vivo*

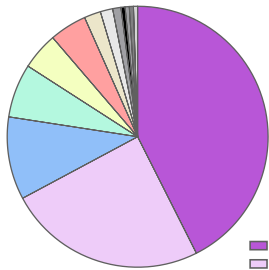
Claim substantiation for NUTRACEUTICALS

Nutraceuticals have been shown to be beneficial for hair growth, and quality, especially in the context of female (FPHL) or male (MPHL) pattern hair loss (Ablon, Dermatol Clin 2021). Metabolomic analysis allows the identification of nutrient and metabolite deficiencies in affected hair follicles. Metabolic analysis and nutrient absorbance assays are now offered using organ culture of healthy or affected hair follicles (Edelkamp et al., Methods Mol Biol 2020).

Metabolomic analysis on freshly collected human hair follicles

1. Untargeted metabolomics analysis (UPLC-MS) of healthy terminal hair follicles

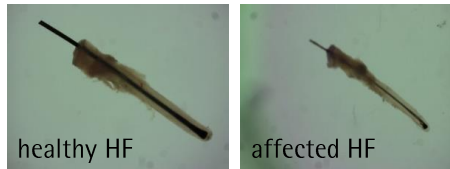
Metabolites Super Classes



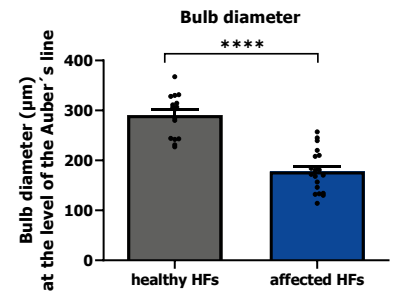
Metabolites are down-stream products of metabolism, deriving from natural cell-derived components generated during metabolism but also from nutraceuticals and nutrients.

2. Relative abundance of metabolites is significantly reduced in affected hair follicles from FPHL patients

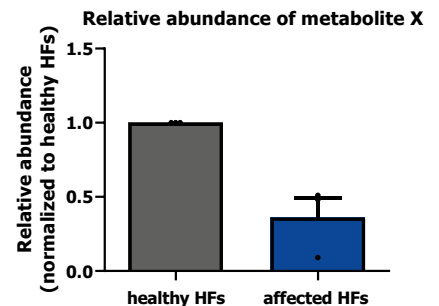
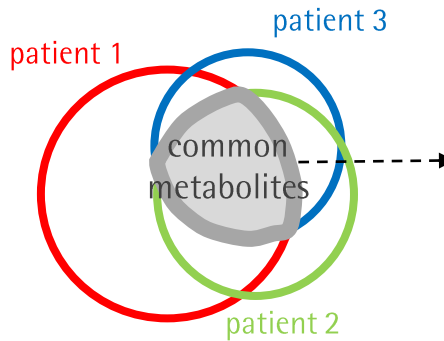
Hair follicles selection



Representative images of a terminal full length HF, and an affected intermediate full length HF from vortex/parietal scalp skin of FPHL patient



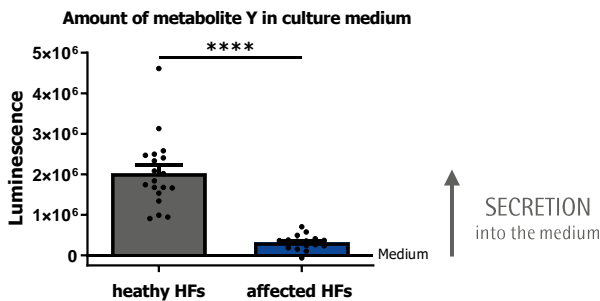
Pooled data from n=3 donors, mean±SEM, **** p<0.0001.



Representative example for reduced abundance of a metabolite in diseased HFs. Mean±SEM.

Hair follicle metabolic activity *ex vivo*

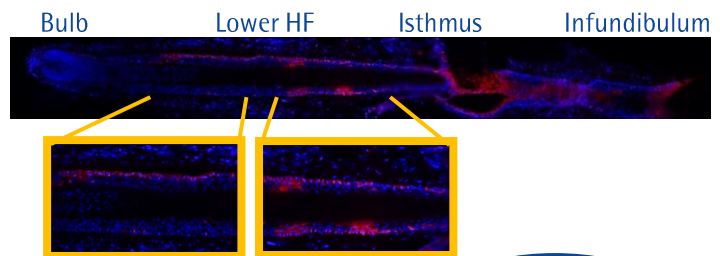
The secretion of metabolite Y is reduced in affected compared to healthy hair follicles *ex vivo*



Representative example for reduced secretion of a metabolite in affected HFs. Pooled data from n=4 donors, mean±SEM, **** p<0.0001.

Nutraceutical supplementation *ex vivo*

Ex vivo cultured HFs absorb fluorescent labeled nutraceutical ingredient supplied in the culture medium.



Representative image showing uptake of Texas Red conjugated nutraceutical X into human HF after 1 h incubation *ex vivo*.

Metabolic analysis and nutrient absorbance assays can be combined with efficacy testing for hair growth parameters such as hair shaft production, and/or anagen maintenance (e.g. Parodi et al., PLOS Biol 2018; Ramot et al., Arch Dermatol Res 2015).

Contact us for a customized study:

Acting CEO:
Dr. Marta Bertolini (PhD)
CSO:
Dr. Janin Edelkamp (PhD)

m.bertolini@monasteriumlab.com
j.edelkamp@monasteriumlab.com
+ 49 (0)251 93263-080

For more details see also our webpage:
www.monasteriumlab.com

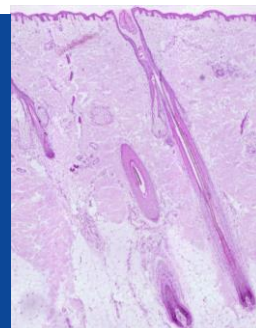


MONASTERIUM LABORATORY

A **Q I M A** Life Sciences Company

All about
skin and hair
bioscience!

State-of-the-art technology and expertise
for all your pre-clinical, mechanistic, and
clinical needs in dermatology research.



- ▶ Pre-clinical Research
- ▶ Clinical Research
- ▶ Education



"We combine
our unique expertise,
our project design creativity,
and our passion to advance
our clients' success in
delivering novel and game-
changing skin and hair
research solutions"

Founder & CEO:
Prof. Dr. Ralf Paus

Your one-stop
source for all *in vitro*,
ex vivo and
in vivo testing
and more.

Reasons why you should choose
Monasterium Laboratory:

- Cutting edge methodologies and techniques
- Tailor-made & customized assays for all needs
- A focus on novel targets and therapeutics for skin & hair disorders: identify-characterize-validate
- Delivering mechanistic action stories, biomarkers & predictors of response
- Claims support for cosmetic ingredients in skin or hair follicle models
- Clinical trials carried out with strategic partners for healthy skin and hair benefits
- Comprehensive project reports & manuscript drafting and submission

Monasterium Laboratory

Skin & Hair Research Solutions GmbH
Mendelstr. 17, 48149 Münster, Germany

www.monasteriumlab.com

For enquiries, please contact:

Acting CEO:

Dr. Marta Bertolini (PhD)

m.bertolini@monasteriumlab.com

+ 49 (0)251 93263-080