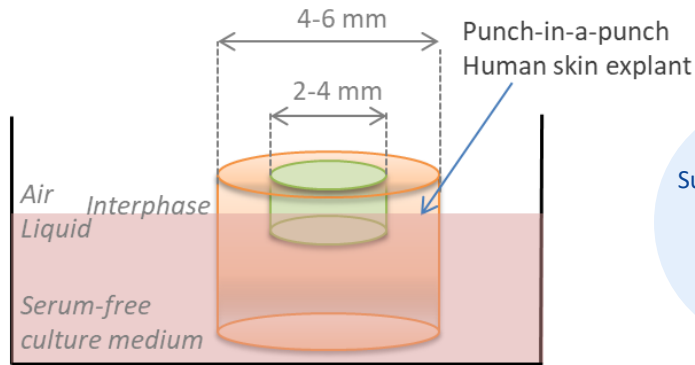


Investigating effects on wound-healing

Study example: Compound X promotes wound-healing *ex vivo*

Our **method:**
acute wound healing
model of human full-
thickness skin *ex vivo*



Modified from Cheret et al, 2014

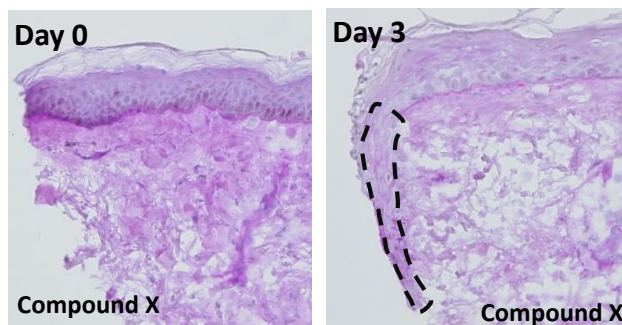
NEW! We also offer a
chronic wound healing
model that mimicks
pathological
conditions

Substances can be
applied either
topically or
systemically

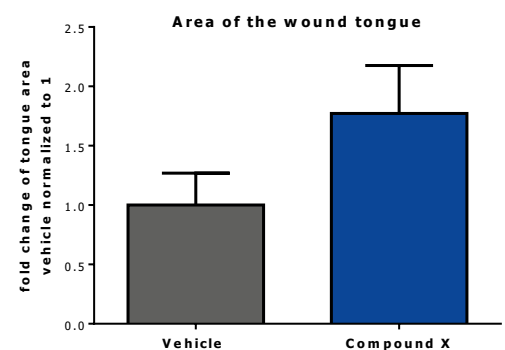
Read-outs:

keratinocytes
migration, re-
epithelialisation,
keratinocyte
proliferation and
apoptosis,
associated keratin,
angiogenesis,
immune cells,...

1. Compound X promotes re-epithelialization of the newly generated wound tongue

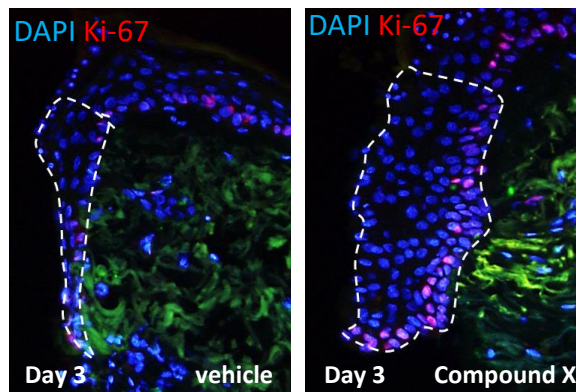
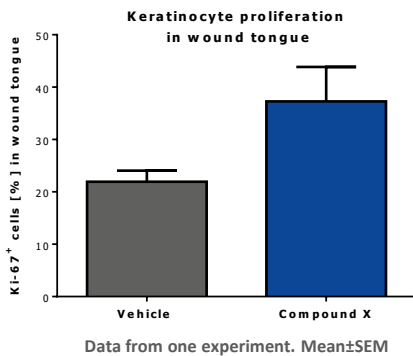


Haematoxylin & Eosin (H&E) histochemistry

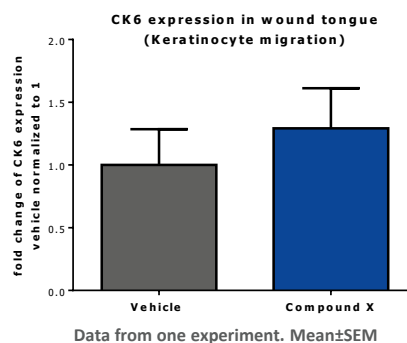
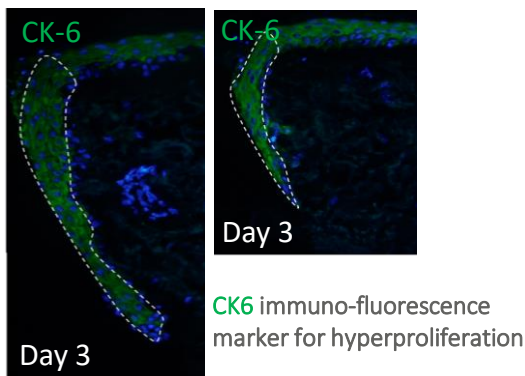


Data from one experiment. Mean±SEM

2. Compound X increases keratinocyte proliferation and migration in the newly generated wound tongue



Ki-67 immuno-fluorescence



Selection of our publications on the topic:

Post et al., Arch Dermatol Res 2021; Liao et al., Arch Dermatol Res 2019; Nasir et al., Wound Repair Regen 2018; Langan et al., Arch Dermatol Res. 2018; Tsai et al., Exp Dermatol 2017; Busse et al., J Invest Dermatol 2014; Meier et al., PLoS One 2013

Contact us for a customized study:

Principal Scientist: Dr. Marta Bertolini (PhD)
COO: Dr. Janin Edelkamp (PhD)

m.bertolini@monasteriumlab.com
j.edelkamp@monasteriumlab.com
+ 49 (0)251 93263-080

For more details see also our webpage:
www.monasteriumlab.com



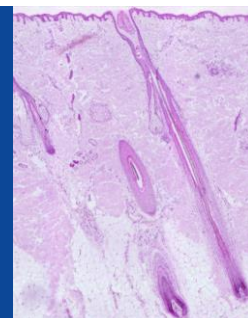
**MONASTERIUM
LABORATORY**

Skin & Hair Research Solutions

*All about
skin and hair
bioscience!*

Your one-stop source for all
in vitro, *ex vivo* and *in vivo* testing
plus additional services.

- ▶ Preclinical Research
- ▶ Clinical Research
- ▶ Innovative Technologies Program
- ▶ Education



"We combine
our unique expertise,
our project design creativity,
and our passion to advance
our clients' success in
delivering novel and game-
changing skin and hair
research solutions"

Founder & CEO:
Prof. Dr. Ralf Paus

Reasons why you should choose Monasterium Laboratory:

- Cutting edge methodologies and techniques
- Tailor-made & customized assays for all needs
- A focus on novel targets and therapeutics for skin & hair disorders: identify-characterize-validate
- Delivering mechanistic action stories, biomarkers & predictors of response
- Claims support for cosmetic ingredients in skin or hair follicle models
- Clinical trials carried out with strategic partners for healthy skin and hair benefits
- Comprehensive project reports & manuscript drafting and submission

Monasterium Laboratory

Skin & Hair Research Solutions GmbH
Mendelstr. 17, 48149 Münster, Germany

www.monasteriumlab.com

For enquiries, please contact:

Principal Scientist & Deputy General Manager:
Dr. Marta Bertolini (PhD)

m.bertolini@monasteriumlab.com
+ 49 (0)251 93263-080